

# AUDIO & VIDEO DOOR ENTRY SYSTEM

FULL-IP  
SYSTEM



CATALOGUE  
PAGES  
→ INSIDE

over  
**4.600**  
active  
patents



over  
**17.000**  
hours/year dedicated  
to training employees  
on environmental issues



over  
**70**  
branches



active in  
**180**  
markets



**5%**  
of revenue  
invested  
in r&d



## COMPANY PROFILE

# LEGRAND

For more than 60 years, Legrand has been supplying integrated solutions for lighting, heating, energy, network and access management in buildings. The Group's business is to design, develop, and market electrical and digital systems that are both simple and innovative, for better communication, tighter security, and improved comfort and convenience in buildings. Legrand is more than ever looking to the future.

The video door entry system range is made by BTicino, which is a Legrand Group brand.

**50%**

of sales generated with products added to the catalog less than 5 years



**37%**

of total investments dedicated to the development of new products and solutions



over  
**4 billion**

electrical devices installed throughout the world



over  
**170.000**

product in the catalog



more than  
**33.000**

employees throughout the world



#### AN ACTIVE INTERNATIONAL PRESENCE

**Asia, Middle East and Pacific:** Australia / China / Hong-Kong / India / Indonesia / Iran / Kazakhstan / Lebanon / Malaysia / New Zealand / Philippines / Qatar / Saudi Arabia / Singapore / South Korea / Syria / Thailand / United Arab Emirates / Uzbekistan / Vietnam / **The Americas:** Brazil / Canada / Chile / Colombia / Costa Rica / Mexico / United States / Venezuela / **Europe and Africa:** Algeria / Austria / Belarus / Belgium / Bosnia-Herzegovina / Bulgaria / Croatia / Czech Republic / Denmark / Egypt / Estonia / France / Germany / Greece / Hungary / Ireland / Italy / Libya / Lithuania / Marocco / Netherland / Poland / Portugal / Romania / Russia / Serbia and Montenegro / Senegal / Slovakia / Slovenia / South Africa / Spain / Switzerland / Tunisia / Turkey / Ukraine / United Kindom



# THE HIGH PERFORMANCES SYSTEM OFFER



## FULL-IP SYSTEM BTicino

Is the ideal solution for large residential complexes with a high number of apartments. The use of the UTP and fiber optic cables to connect all the devices, guarantees performances and high signal quality.



Touch screen internal unit



Small entrance panel

## MAIN PERFORMANCES AND FUNCTIONALITIES:

### High performances, no limits!

- **no limits:** extension and distance (using optical fiber), riser columns, number of switchboards
- **multichannel:** for more conversations at the same time (no busy lines)

### High definition video quality

- 800x480 lines

### Technology

- Full-IP, SIP/TCP protocol, H.264 video format, LINUX 2.6.32 OS

### Cabling

- Cat. 5 + RJ45 ( with dedicated network )

### Additional security functionalities further to DES

- Alarm detector management, management center
- Home Automation functions



Digital call entrance panel



Switchboard



# Digital CALL ENTRANCE PANEL



Call by code

LCD display resolution 480x273, with user-friendly interface and customization of the welcome message

Digital call

Open door by door lock

Possibility to Expand IC/ID card AC empty box function (need internally card reader antenna)

Direct call to porter switchboard

High end design and finish

Stainless steel finish

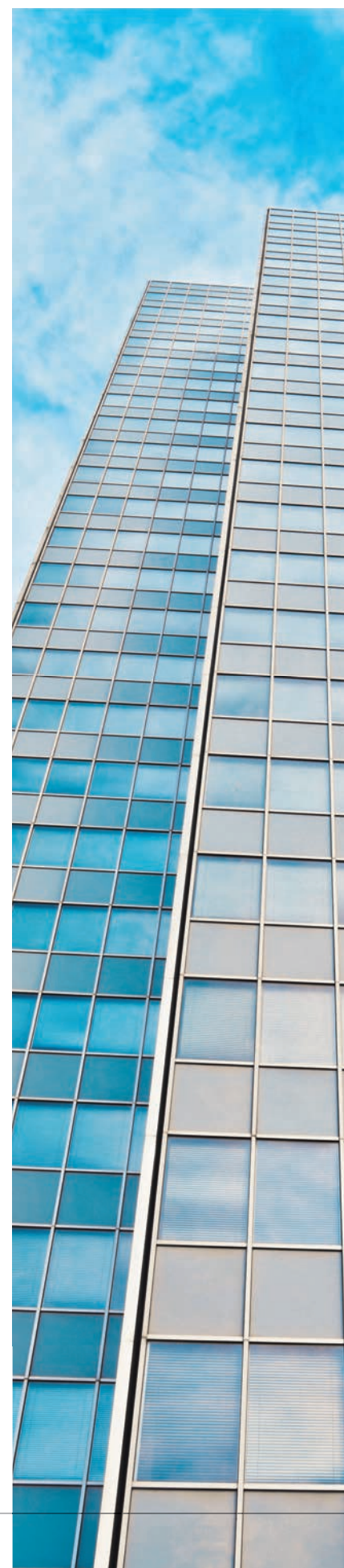
Protection degree IP54 means is also suitable for critical environments

Flush mounted with 10 mm thickness

Color monitor 4,3" TFT LCD



Rear view









# Small entrance PANEL

Camera 1 million  
pixel COMS



Call Internal unit,  
double check  
confirmation

Possibility to Expand  
IC/ID card AC  
empty box function  
(need internally  
card reader antenna)



Rear view





High end design and finish

Stainless steel finish

Protection degree IP54 means is also suitable for critical environments

Flush mounted with just 5 mm thickness



# Touch Screen INTERNAL UNIT



- Capacitive Touch Screen
- Metal cover plate in grey finish
- Wall mounted installation
- Thin shape, only 20 mm depth
- Power supply by plug in transformer or by power supply accessory



10 " Touch Screen internal unit

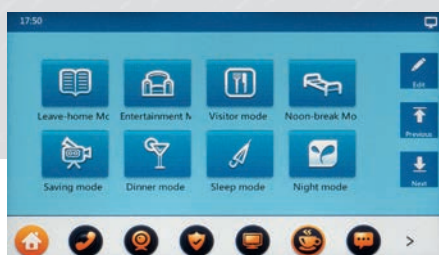


7 " Touch Screen internal unit





- Intercom between all the apartment
- Home automation function
- User friendly interface by icons
- Security functions (possibility to connect 8 sensor)
- Tamper switch
- Image and voice record



Home automation screenshot



Intercom screenshot

20  
Thin, just 20 mm depth



- SOS push button to call help in the case of an emergency
- Communication push button
- Door lock release push button



WINDOW  
BURGLAR-ALARM  
CONTACT

DOOR  
BURGLAR-ALARM  
CONTACT



Touch Screen  
internal unit

# new Touch Screen INTERNAL UNIT

## ANTI-BURGLAR & TECHNICAL ALARMS

The new touch screen internal unit can work like a real burglar-alarm unit. In fact it can manage up to 8 intrusion and technical alarms.





Switchboard

The alarm contacts and the infrared sensors can detect any intrusions and quickly signal the event, activating the sound alarm on the internal unit.

A gas leak or the detection of smoke caused by a fire starting activates the sensor, which sends the alarm signal to the internal unit, making it sound.

If there is a switchboard in the main system, the signal that an alarm has been given is sent to the monitoring. The sensors of the technical alarms are active 24h-24h.



FULL-IP table top porter switchboard device with high resolution 7" LCD display and icons menu.

- Able to communicate with handsets, entrance panels and other devices.
- It manages building incoming calls and alarms.
- Device can be linked by LAN to other switchboards for the management of larger system.
- Complete alarms management: receiving, recording and storage of alarms.
- Management of SOS call records.



The integrated IP management software can provide the communication for calls between internal units and the switchboard.



# Management CENTER

## INTERCOM FUCTIONS

Audio intercom between internal units:

- of different apartments (same building or different building)
- inside the same apartment (max 3 internal units for apartment)



Management center



### APARTMENT 1 - FLOOR 1



### APARTMENT 2 - FLOOR 1



CAT5E

CAT5E

CAT5E

CAT5E

CAT5E

CAT5E

EP

## ALARM FUNCTIONS

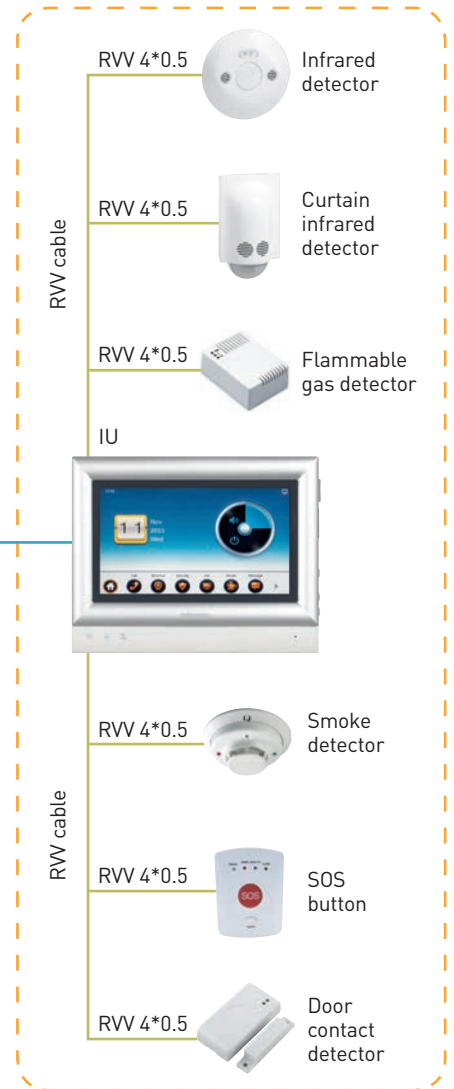
- the management center receives all the alarm alarm



Management center



### APARTMENT



## HOME AUTOMATION INTEGRATION

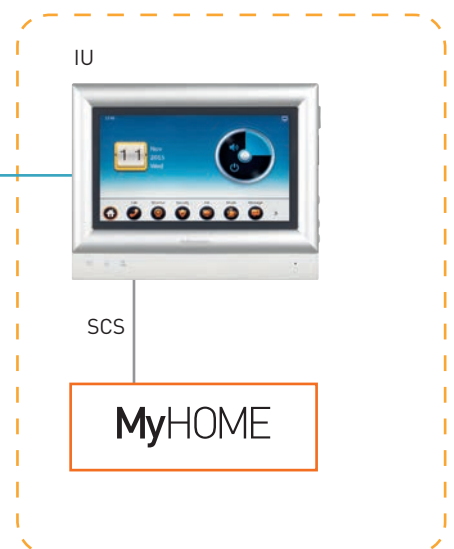
- the internal unit has the SCS connector to manage the home automation



Management center

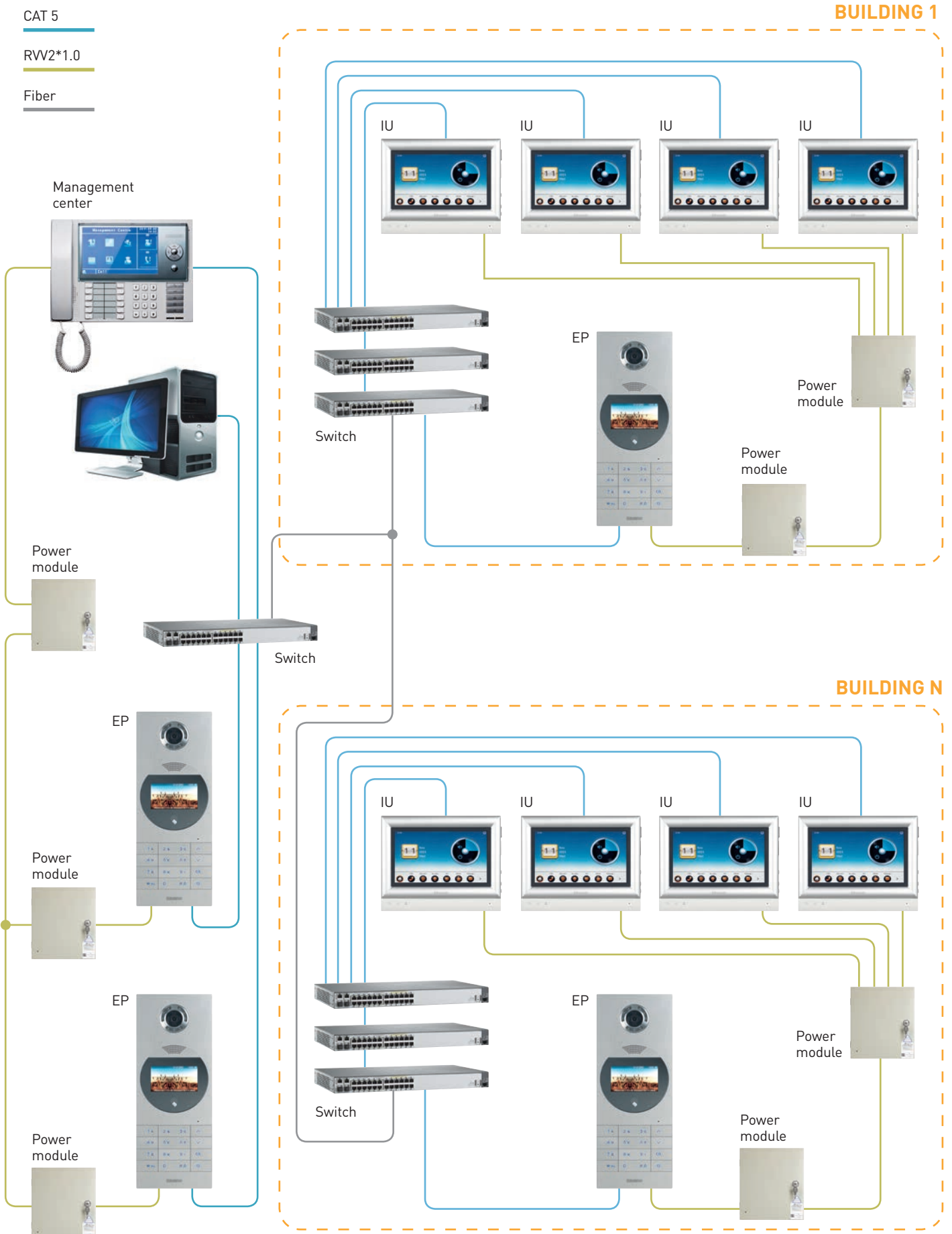


### APARTMENT





# System architecture



# Audio & Video door entry system

full IP system



BT-371000



BT-372000



BT-372001



BT-376000



BT-371001



BT-376400



BT-376401

Pack	Cat.Nos	Digital calls colour entrance panels
1	BT-371000	Entrance panel flush mounted Call by alphanumeric keyboard Door lock by code digit Stainless steel surface with blue back lite Possibility to integrate access control antenna Direct call to management switchboard IP54 with a color display LCD of 4,3" Power supply by plug in accessory or by power supply accessory 5 mm thickness

Pack	Cat.Nos	Touch screen hands-free internal units
1	BT-372000	Wall mounted installation by metal accessory, metal coverplate in grey finish Userfriendly interface by icons, 20mm depth, power supply by plug in transformer or by power supply accessory High end functionalities: intercom between apartment, home automation functions, image and voice record, digital photo frame Possibility to connect 8 alarm sensors, antiburglar or technical. SOS push button call to management center
1	BT-372000	7" touch screen video internal unit
1	BT-372001	10" touch screen video internal unit

Pack	Cat.Nos	Small entrance panel
1	BT-371001	With two push button, one for internal unit call and one for management center call Stainless steel finish with 5 mm thickness with flush mounted installation, IP 54 Possibility to integrate access control reader RJ45 connection Power supply by plug in transformer or by power supply accessory

Pack	Cat.Nos	Switchboard
1	BT-376400	Full IP table top porter switchboard device with 7" LCD display and icons menu Possibility to communicate with all the apartment of the system, it can manage building incoming calls and alarms Possibility to record and storage alarms and SOS call

Pack	Cat.Nos	System accessories
1	BT-376000	<b>Power supply</b> Full IP Power supply, can supply up to 8 devices. Possibility to install more power supply accessory in case of big installation. Metal box with key lock to protect in all the environment.
1	BT-376401	<b>Software</b> Software management switchboard

## Dimensional data

MODEL NAME	CODE NUMBER	DIMENSIONS (mm)
Entrance panel with call address list	BT-371000	392x152x61,8
7" Touch screen internal unit	BT-372000	157x198x27
10" Touch screen internal unit	BT-372001	255x198x27
Full IP Power supply unit	BT-376000	235x265x60
Small entrance panel	BT-371001	230x140x60,3
7" Full IP table porter switchboard device	BT-376401	390x210 (165)x170







## FOLLOW US ALSO ON

@ [www.legrand.com](http://www.legrand.com)

 [www.youtube.com/user/legrand](http://www.youtube.com/user/legrand)

 [www.facebook.com/Legrand](http://www.facebook.com/Legrand)

 [twitter.com/legrand\\_news](http://twitter.com/legrand_news)

 [pinterest.com/legrandgroup](http://pinterest.com/legrandgroup)



**World Headquarters**  
and International Department  
87045 Limoges Cedex - France  
☎ : + 33 (0) 5 55 06 87 87  
Fax: + 33 (0) 5 55 06 74 55